



India Meteorological Department  
Earth System Science Organisation  
(Ministry of Earth Sciences)

BULLETIN NO. : 28 (ARB/02/2020)

TIME OF ISSUE: 1930 HOURS IST

DATED: 03.06.2020

FROM: INDIA METEOROLOGICAL DEPARTMENT (FAX NO. 24643965/24699216/24623220)

TO: CONTROL ROOM, NDM, MINISTRY OF HOME AFFAIRS (FAX.NO. 23092398/23093750)

CONTROL ROOM NDMA (FAX.NO. 26701729)

CABINET SECRETARIAT (FAX.NO.23012284, 23018638)

PS TO HON'BLE MINISTER FOR S & T AND EARTH SCIENCES (FAX NO.23316745)

SECRETARY, MOES (FAX NO. 24629777)

H.Q. (INTEGRATED DEFENCE STAFF AND CDS) (FAX NO. 23005137/23005147)

DIRECTOR GENERAL, DOORDARSHAN (23385843) DIRECTOR GENERAL, AIR (23421101, 23421105, 23421219)

PIB MOES (FAX NO. 23389042)

UNI (FAX NO. 23355841)

D.G. NATIONAL DISASTER RESPONSE FORCE (NDRF) (FAX NO. 26105912, 2436 3260)

DIRECTOR, PUNCTUALITY, INDIAN RAILWAYS (FAX NO. 23388503)

CHIEF SECRETARY, KERALA (FAX NO. 0471-2327176)

ADMINISTRATOR, LAKSHADWEEP ISLANDS (FAX NO. 0413-262184)

ADMINISTRATOR, UNION TERRITORY OF DAMAN & DIU (0260-2230775)

ADMINISTRATOR, UNION TERRITORY OF DADRA NAGAR HAVELI (0260-2230775)

CHIEF SECRETARY, KARNATAKA (FAX NO. 080-22258913)

CHIEF SECRETARY, GOA (FAX NO. 0832-2415201)

CHIEF SECRETARY, MAHARASHTRA (FAX NO. 022- 22028594)

CHIEF SECRETARY, GUJARAT (FAX NO. 079-23250305)

CHIEF SECRETARY, DAMAN & DIU (FAX NO. 0260-2230775)

CHIEF SECRETARY, DADRA & NAGAR HAVELI (FAX NO. 0260-2645466)

Sub: **Cyclonic Storm 'NISARGA' over interior Maharashtra**

The Severe Cyclonic Storm '**NISARGA**' over coastal Maharashtra moved northeastwards with a speed of about 23 kmph during past 06 hours, weakened into a **Cyclonic Storm** and lay centred at 1730 hours IST of today the 03<sup>rd</sup> June, 2020 over interior Maharashtra, near latitude 19.0°N and longitude 73.7°E, 90 km east of Mumbai (Maharashtra) and 50 km north-northwest of Pune (Maharashtra).

It is very likely to move northeastwards and weaken into a Deep Depression during next 03 hours.

Forecast track and intensity are given in the following table:

Date/Time(IST)	Position (Lat. °N/ long. °E)	Maximum surface (Kmph)	sustained wind speed	Category of cyclonic disturbance
03.06.20/1730	19.0/73.7	60-70	gusting to 80	Cyclonic Storm
03.06.20/2330	19.7/74.3	50-60	gusting to 70	Deep Depression
04.06.20/0530	20.5/75.0	40-50	gusting to 60	Depression
04.06.20/1130	21.1/75.5	30-40	gusting to 50	Depression

**Warnings:**

(i) **Rainfall:**

- Light to moderate rainfall at most places with heavy to very heavy falls at isolated places very likely over north Madhya Maharashtra, Marathwada, Vidarbha and south Madhya Pradesh during next 24 hours.
- Light to moderate rainfall at most places with heavy to very heavy falls at isolated places over south Konkan & Goa and south Gujarat region during next 12 hours.

**Spatial rainfall distribution: Isolated: <25%, A few: 26-50%, Many: 51-75%, Most: 76-100%**

**Rainfall amount (mm): Heavy rain: 64.5 – 115.5, Very heavy rain: 115.6 – 204.4, Extremely heavy rain: 204.5 or more.**

**(ii) Wind warning**

- Gale wind, speed reaching 60-70 kmph gusting to 80 kmph, is prevailing over Madhya Maharashtra (Pune, Ahmednagar, Satara, Aurangabad, Beed, Solapur, Osmanabad Districts). It is likely continue for next 06 hours and reduce gradually thereafter. Squally wind speed reaching 40-50 kmph gusting to 60 kmph is prevailing along & off Ratnagiri, Sindhudurg, Mumbai, Thane, Raigad Districts of Maharashtra during next 06 hours and will reduce gradually thereafter.
- Squally wind, speed reaching 40-50 kmph gusting to 60 kmph prevailing over northeast Arabian Sea along & off remaining districts of south Gujarat coast. It is likely to reduce during next 03 hours.
- Squally wind, speed reaching 50-60 kmph gusting to 70 kmph is prevail over eastcentral Arabian Sea along and off Karnataka-Goa coasts during next 06 hours and will reduce gradually thereafter.

**(iii) Sea condition**

The Sea condition will be rough to very rough Eastcentral and adjoining Northeast Arabian Sea and along & off Karnataka-Goa-Maharashtra-south Gujarat coasts during next 12 hours.

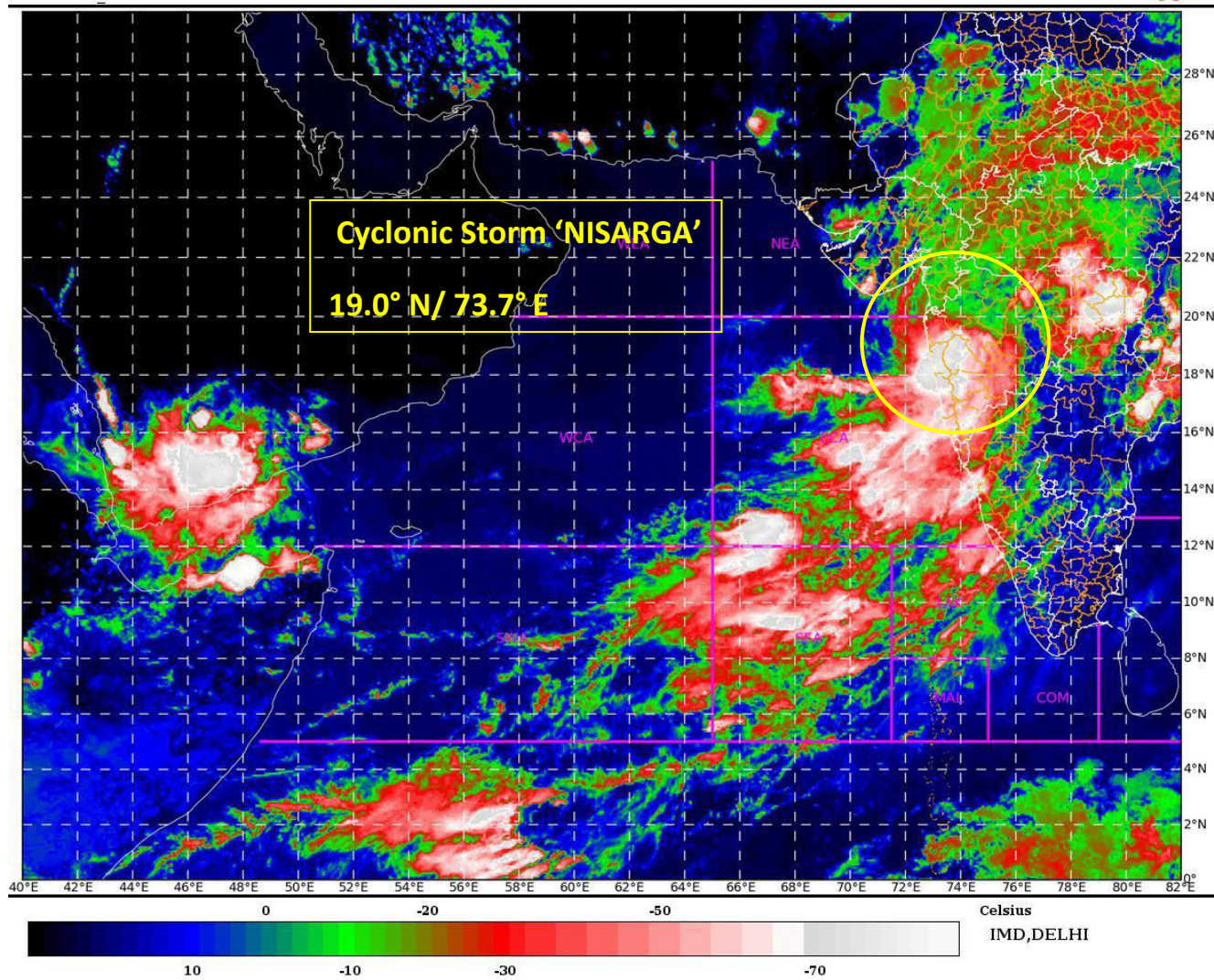
**(iv) Fishermen Warning**

Fishermen are advised not to venture into Eastcentral and Northeast Arabian Sea and along & off Karnataka-Goa-Maharashtra-south Gujarat coasts during next 12 hours.

*The next bulletin will be issued at 2330 hrs IST of today, the 03<sup>rd</sup> June, 2020.*

**(Sunitha Devi)**  
**Scientist-E, RSMC, New Delhi**

**Copy to: ACWC Chennai/ ACWC Mumbai/ MC Goa/ MC Bengaluru/ CWC Ahmedabad/ Thiruvananthapuram.**



Legend: ECA- east-Central Arabian Sea

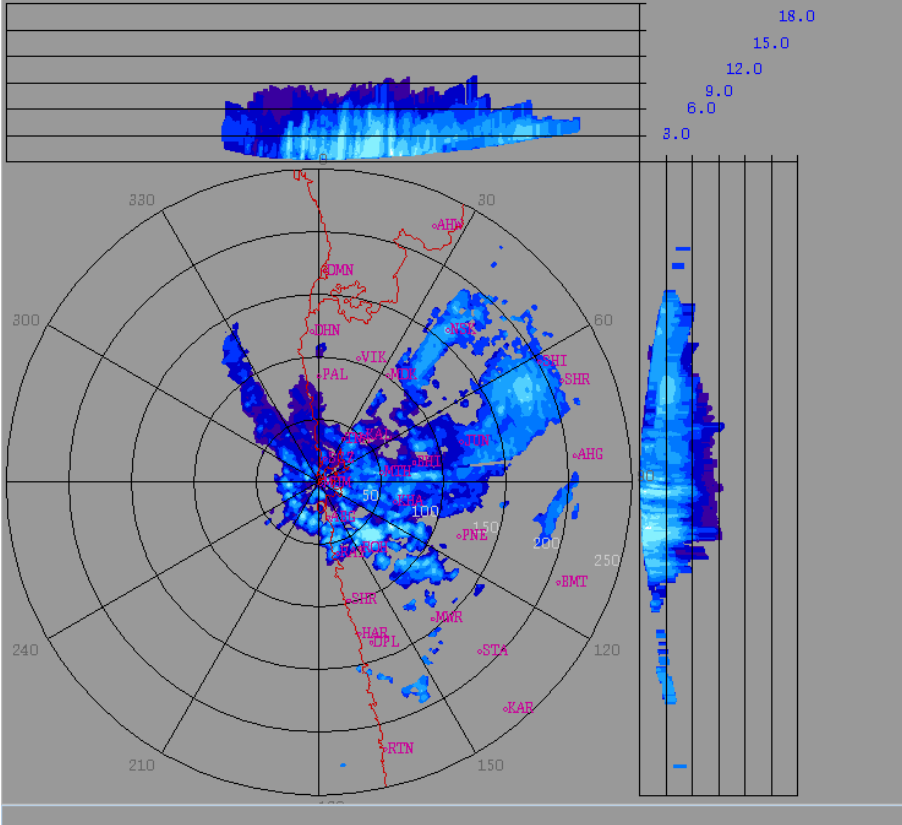
Spatial rainfall distribution: Isolated: <25%, A few: 26-50%, Many: 51-75%, Most: 76-100%  
Rainfall amount (mm): Heavy rain: 64.5 – 115.5, Very heavy rain: 115.6 – 204.4, Extremely heavy rain: 204.5 or more.

2020/06/03

13:49:14 (UTC)

MAX(Z)

DWR MUMBAI  
( 18.9013N , 72.8076E , 100.00 mts )



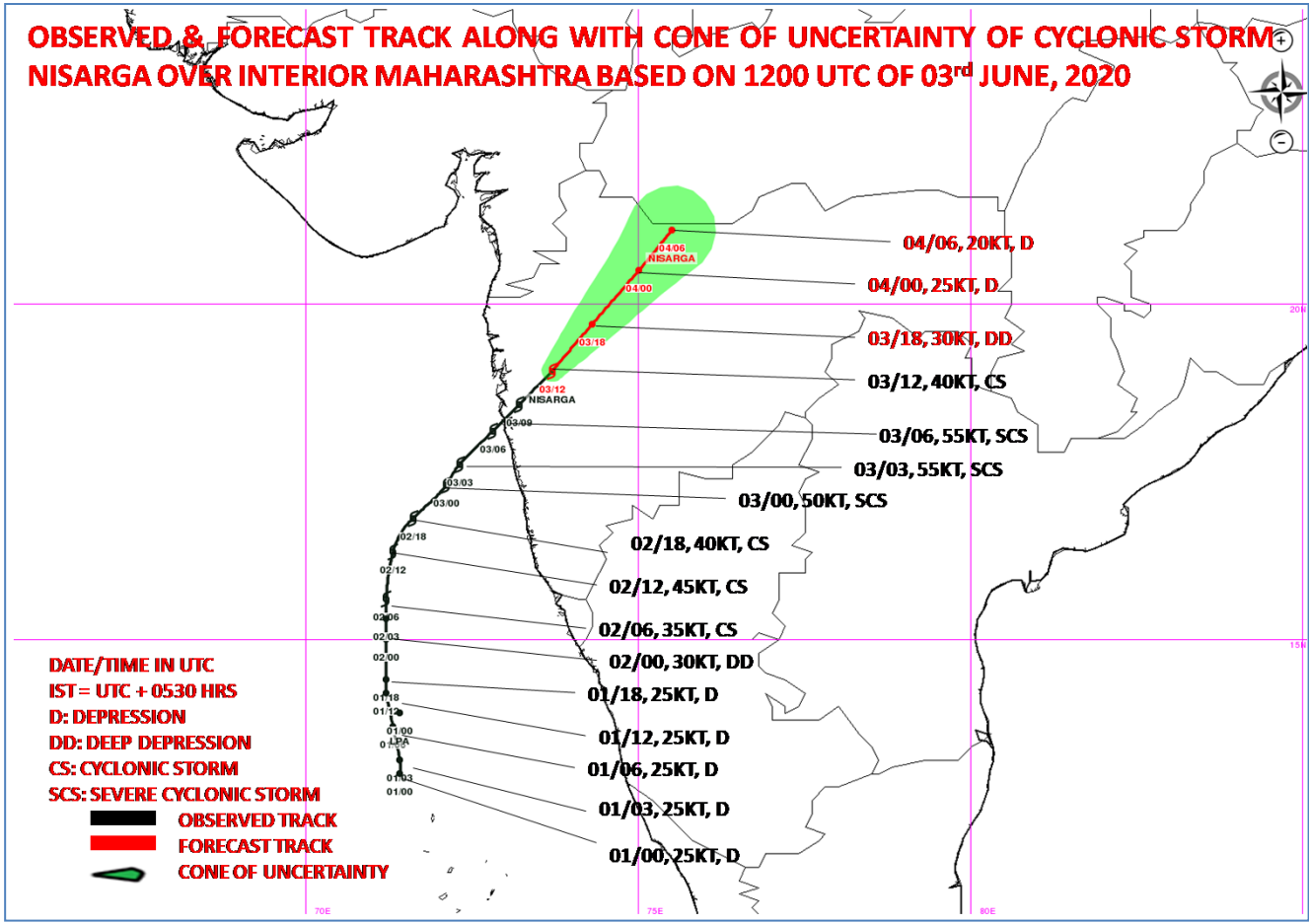
Height : 18.0 Km  
 Layer Spacing : 0.100 Km  
 Z (Lo, Hi) : -32.0, 95.0 dBZ  
 Grid size : 1 Km  
 Display Range : 250 Km  
 Display Res : 1.0 Km/Pix  
 DDR Enable : Yes  
 Scan Elev (Lo, Hi) : 0.2, 21.0 Deg  
 PRF (Lo, Hi) : 450, 600 Hz  
 Scan Res : 150 mts  
 Scan RPM : 2.0  
 Log Threshold : 2 dB  
 DTP : 42  
 Pulse Width : 1.0  
 Notch Width : 54.0 Hz  
 SQI : 0.25  
 CSR : 20  
 Scan Range : 240 Km  
 Preprocessings : NONE

dBZ

Grey	No Data
Red	60.7: > 65.0
Orange	56.4: 60.7
Light Orange	52.1: 56.4
Yellow	47.8: 52.1
Light Yellow	43.5: 47.8
Light Green	39.2: 43.5
Green	34.9: 39.2
Light Blue	30.7: 34.9
Blue	26.4: 30.7
Light Cyan	22.1: 26.4
Cyan	17.8: 22.1
Dark Cyan	13.5: 17.8
Dark Blue	9.2: 13.5
Very Dark Blue	4.9: 9.2
Black	0.6: 4.9

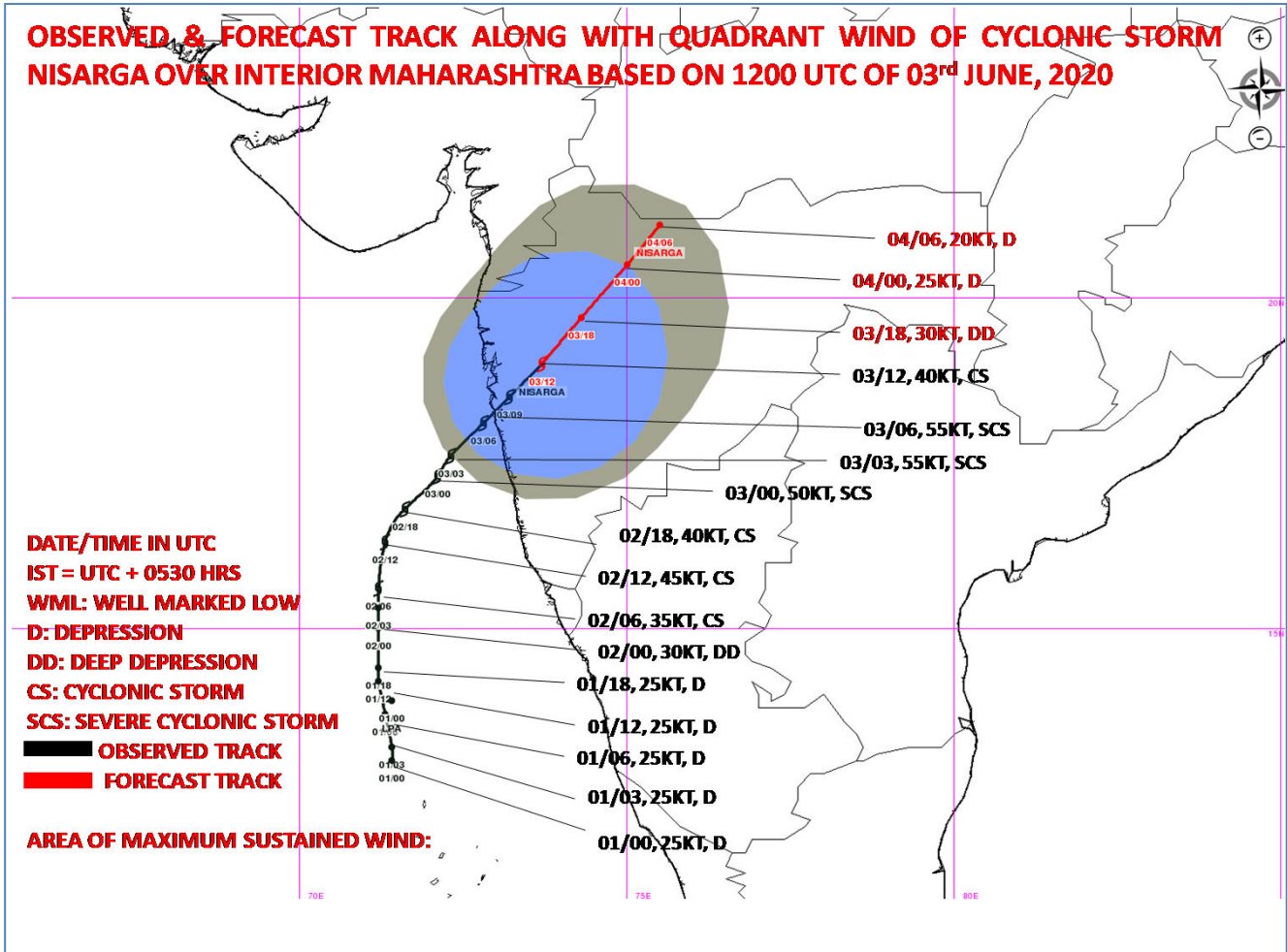
**DOPLER WEATHER RADAR MUMBAI AT 14:39:13 HOURS IST OF 03.06.2020**

**Spatial rainfall distribution: Isolated: <25%, A few: 26-50%, Many: 51-75%, Most: 76-100%**  
**Rainfall amount (mm): Heavy rain: 64.5 – 115.5, Very heavy rain: 115.6 – 204.4, Extremely heavy rain: 204.5 or more.**



Spatial rainfall distribution: Isolated: <25%, A few: 26-50%, Many: 51-75%, Most: 76-100%  
 Rainfall amount (mm): Heavy rain: 64.5 – 115.5, Very heavy rain: 115.6 – 204.4, Extremely heavy rain: 204.5 or more.





Spatial rainfall distribution: Isolated: <25%, A few: 26-50%, Many: 51-75%, Most: 76-100%  
 Rainfall amount (mm): Heavy rain: 64.5 – 115.5, Very heavy rain: 115.6 – 204.4, Extremely heavy rain: 204.5 or more.